

### Madison CSD - Groundwater Threshold Analysis

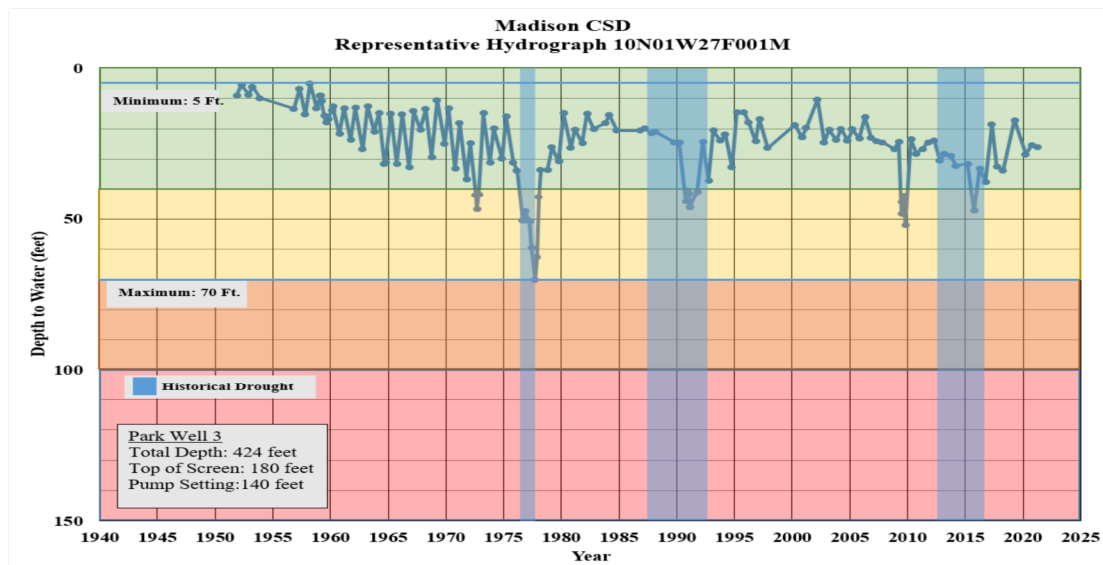
Service Area	Madison CSD
Well Name	Madison Well 3
Reference Point Elevation	155.1 feet
Well Depth	430 feet
Top Well Screen	175 feet
Pump Setting	140 feet
Operational Flow Rate	150 gpm
Max Flow Rate	650 gpm

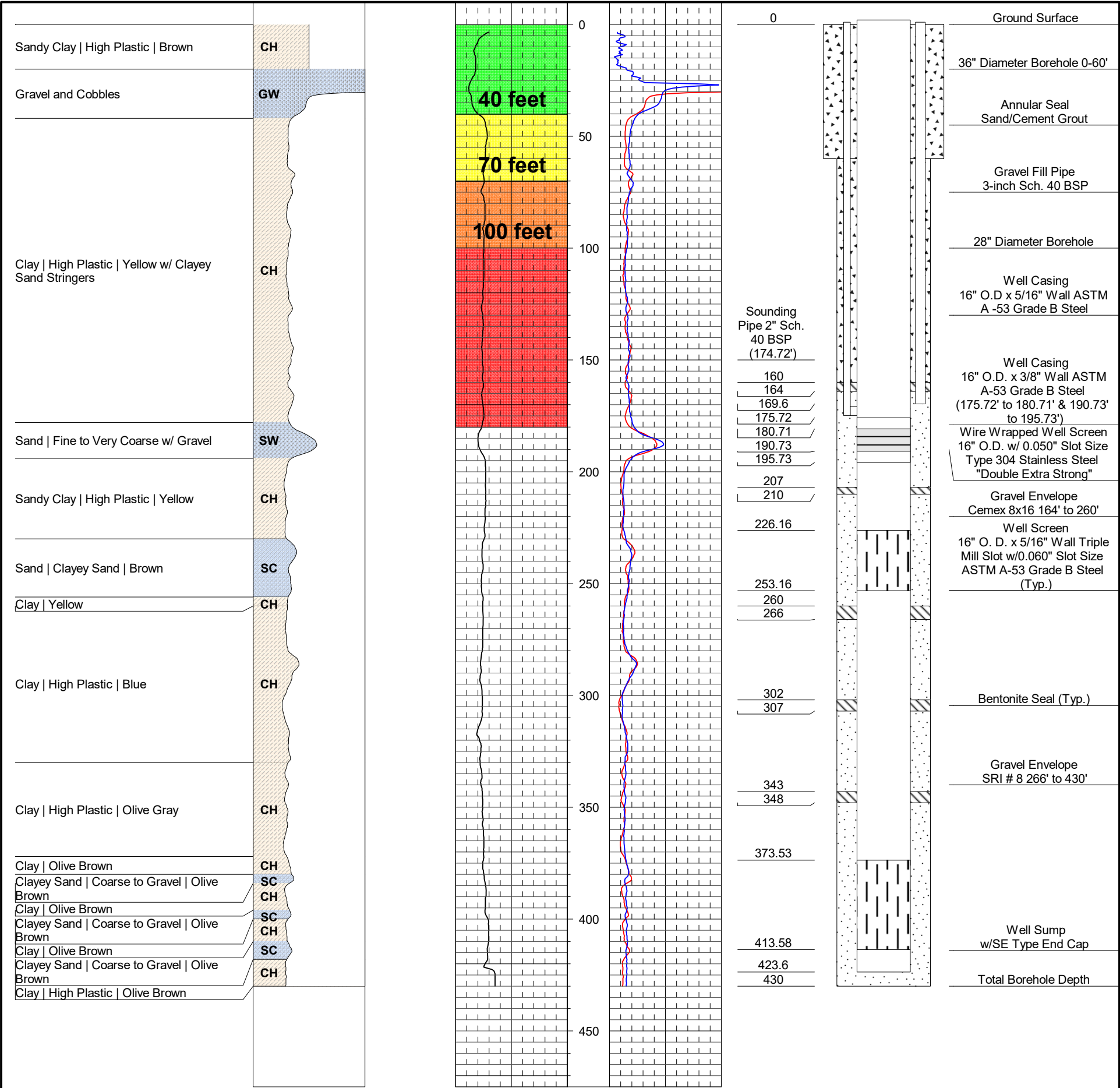
Historical Groundwater Level High	5 feet
Historical Groundwater Level Low	70 feet

	Low	High
Flow Testing Date	5/13/2021	
Static Water Level	41.7 feet	41.7 feet
Flow Rate	150 gpm	650 gpm
Pumping Water Level Depth	46.3 feet	62 feet
Total Drawdown	4.6 feet	20 feet
Specific Capacity (30-minute)	33 gpm/foot	30 gpm/foot

Tier Level	Static Groundwater Level
Green Tier	0 to 40 feet
Yellow Tier	40 to 70 feet
Orange Tier	70 to 100 feet
Red Tier	100+ feet

### Index Hydrograph





Status	Response
Normal	Monthly static water level. No other action required
Cautionary Concern	Continue monthly monitoring. Public Outreach to conserve water. Communication with proper agencies.
Severe Concern	Weekly monitoring. Continue public outreach with severe conservation. Possibly implmeent rationing and or modulating water delivery. Communication with proper agencies.
Critical Concern	Daily monitoring. Face-to-face public outreach. Critical emergency response may be required. May involve extreme conservation, import of potable water, multi-agency notification/request for help.